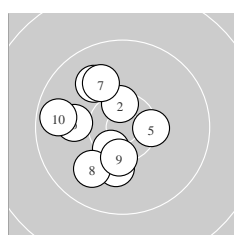
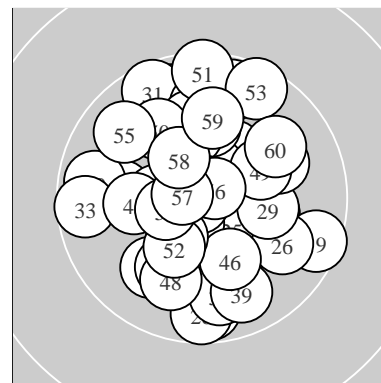
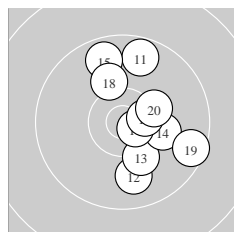


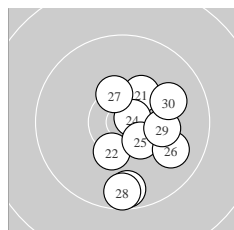
Ergebnis: **609.3** (583)
 Serien: 101.7 100.9 101.7 101.5 102.0 101.5
 Zähler: 43 17 0 0 0 0 0 0 0
 Innenzehner: 23
 weiteste: 1159 (51), 1109 (53), 1108 (19)
 beste Teiler 58.0 (37.) 110.5 (43.) 144.4 (56.)
 Trefferlage 0.05 mm links, 0.51 mm hoch
 Streuwert 4.95, horizontal: 4.17, vertikal: 5.62



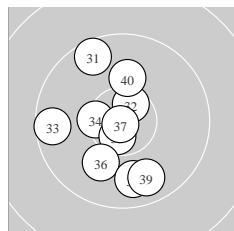
Serie 1:
 10.0 ↘ 10.5 * 10.5 * 10.2 ↓ 10.4 *
 10.0 ← 10.0 ↘ 10.0 ↙ 10.4 * 9.7 ←
 beste Teiler 353.2 (2.) 370.9 (3.) 431.2 (5.)
 Trefferlage 2.88 mm links, 0.16 mm tief
 Streuwert 4.43, horizontal: 3.95, vertikal: 4.86



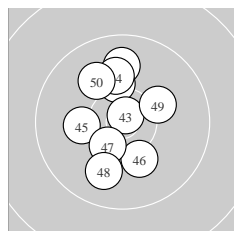
Serie 2:
 9.7 ↑ 9.9 ↓ 10.2 ↘ 10.2 → 9.7 ↑
 10.7 * 10.5 * 10.1 ↘ 9.6 → 10.3 *
 beste Teiler 215.1 (16.) 345.3 (17.) 519.4 (20.)
 Trefferlage 2.88 mm rechts, 0.83 mm hoch
 Streuwert 5.06, horizontal: 3.79, vertikal: 6.06



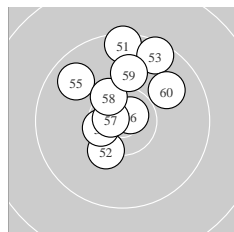
Serie 3:
 10.3 * 10.4 * 9.7 ↓ 10.7 * 10.5 *
 9.9 ↘ 10.4 * 9.6 ↓ 10.2 → 10.0 →
 beste Teiler 161.7 (24.) 388.2 (25.) 441.3 (27.)
 Trefferlage 2.50 mm rechts, 2.06 mm tief
 Streuwert 4.48, horizontal: 3.29, vertikal: 5.41



Serie 4:
 9.6 ↘ 10.6 * 9.6 ← 10.4 * 10.6 *
 10.1 ↙ 10.9 * 9.8 ↓ 9.8 ↓ 10.1 ↑
 beste Teiler 58.0 (37.) 243.1 (35.) 286.2 (32.)
 Trefferlage 1.65 mm links, 0.80 mm tief
 Streuwert 5.20, horizontal: 4.11, vertikal: 6.09



Serie 5:
 9.9 ↑ 10.2 ↑ 10.8 * 10.1 ↑ 10.2 ←
 10.2 ↓ 10.4 * 10.0 ↓ 10.2 → 10.0 ↘
 beste Teiler 110.5 (43.) 422.2 (47.) 584.9 (42.)
 Trefferlage 0.89 mm links, 1.41 mm hoch
 Streuwert 4.58, horizontal: 3.27, vertikal: 5.59



Serie 6:
 9.5 ↑ 10.3 * 9.6 ↑ 10.5 * 9.8 ↘
 10.8 * 10.7 * 10.4 * 10.0 ↑ 9.9 →
 beste Teiler 144.4 (56.) 183.3 (57.) 345.7 (54.)
 Trefferlage 0.30 mm links, 3.88 mm hoch
 Streuwert 4.55, horizontal: 4.02, vertikal: 5.03

Meyton Elektronik

ISSF Prone Men – Wertung –

offene Klasse

StartNr: 3

StandNr: 49

9. November 2019 10:48

Edelmann, Tobias #44261206

SGes Bockau 1871 / SGes Bockau 1871

Unterschrift des Schützen

Meyton Elektronik