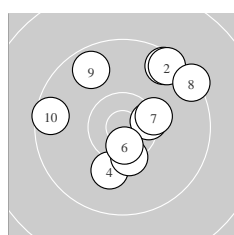
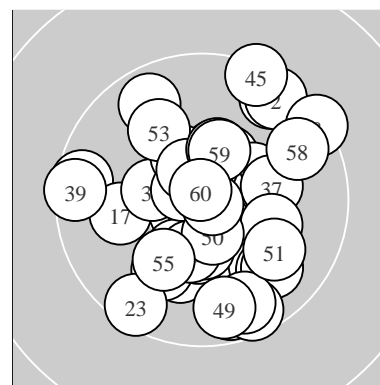
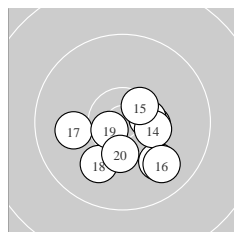


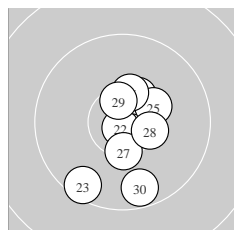
Ergebnis:	613.9	(585)
Serien:	99.6	102.8 103.1 103.4 101.6 103.4
Zähler:	45	15 0 0 0 0 0 0 0 0
Innenzehner:	36	
weiteste:	1231 (8), 1228 (45), 1148 (39)	
beste Teiler	30.0 (31.)	91.0 (60.) 91.4 (22.)
Trefferlage	1.08 mm rechts,	0.45 mm tief
Streuwert	4.66, horizontal:	4.29, vertikal: 5.00



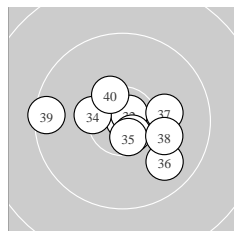
Serie 1:	9.6 ↗	9.5 ↗	10.4 *	10.1 ↓	10.4 *
	10.6 *	10.3 *	9.4 ↗	9.7 ↘	9.6 ←
beste Teiler	277.4 (6.)	402.1 (3.)	460.7 (5.)		
Trefferlage	1.54 mm rechts, 2.41 mm hoch				
Streuwert	6.02, horizontal: 6.21, vertikal: 5.83				



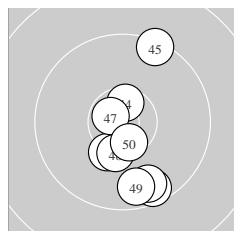
Serie 2:	10.4 *	10.0 ↘	10.5 *	10.4 *	10.5 *
	9.9 ↘	10.0 ←	10.0 ↓	10.7 *	10.4 *
beste Teiler	229.1 (19.)	354.4 (15.)	378.5 (13.)		
Trefferlage	1.30 mm rechts, 2.41 mm tief				
Streuwert	3.84, horizontal: 4.43, vertikal: 3.15				



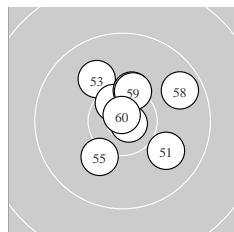
Serie 3:	10.6 *	10.8 *	9.6 ↓	10.4 *	10.3 *
	10.4 *	10.4 *	10.4 *	10.5 *	9.7 ↓
beste Teiler	91.4 (22.)	281.6 (21.)	328.1 (29.)		
Trefferlage	0.97 mm rechts, 0.97 mm tief				
Streuwert	4.32, horizontal: 3.01, vertikal: 5.31				



Serie 4:	10.9 *	10.8 *	10.7 *	10.4 *	10.6 *
	9.9 ↘	10.1 →	10.1 ↘	9.5 ←	10.4 *
beste Teiler	30.0 (31.)	146.5 (32.)	237.4 (33.)		
Trefferlage	0.46 mm rechts, 0.44 mm tief				
Streuwert	4.38, horizontal: 5.53, vertikal: 2.78				



Serie 5:	9.6 ↓	10.6 *	10.3 *	10.6 *	9.4 ↗
	9.7 ↓	10.7 *	10.4 *	9.7 ↓	10.6 *
beste Teiler	202.1 (47.)	292.8 (44.)	305.8 (42.)		
Trefferlage	1.18 mm rechts, 2.90 mm tief				
Streuwert	5.00, horizontal: 2.59, vertikal: 6.59				



Serie 6:	10.0 ↘	10.6 *	10.0 ↘	10.8 *	10.1 ↓
	10.6 *	10.4 *	9.7 ↗	10.4 *	10.8 *
beste Teiler	91.0 (60.)	100.8 (54.)	263.0 (52.)		
Trefferlage	1.01 mm rechts, 1.59 mm hoch				
Streuwert	3.95, horizontal: 3.95, vertikal: 3.96				

ISSF Prone Men – *Wertung* – **offene Klasse**

StartNr: 19

StandNr: 44

10. November 2019 10:56

Heider, Jan #999901286

SV Neuenhagen / SV Neuenhagen

Unterschrift des Schützen

Meyton Elektronik