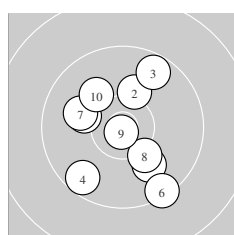
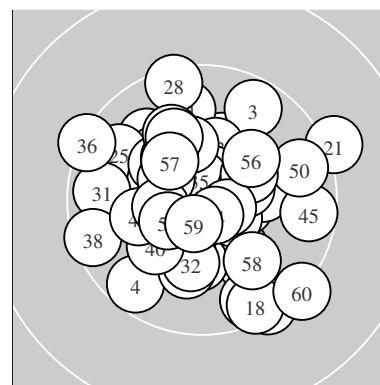
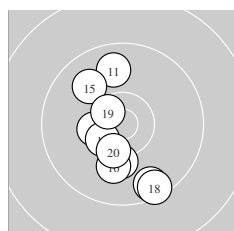


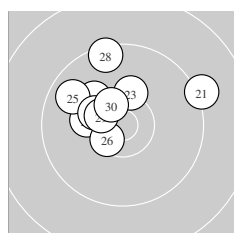
Ergebnis: **607.5** (584)
 Serien: 100.1 100.9 101.0 101.1 101.8 102.6
 Zähler: 44 16 0 0 0 0 0 0 0
 Innenzehner: 23
 weiteste: 1397 (21), 1324 (60), 1258 (36)
 beste Teiler 83.9 (9.) 195.2 (54.) 212.9 (35.)
 Trefferlage 0.66 mm links, 0.31 mm hoch
 Streuwert 5.15, horizontal: 5.26, vertikal: 5.04



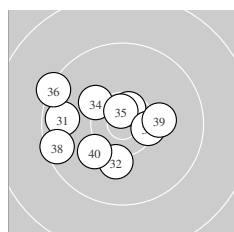
Serie 1:
 10.1 ↖ 10.2 ↗ 9.7 ↗ 9.6 ↘ 10.0 ↘
 9.4 ↘ 10.0 ↖ 10.2 ↘ 10.8 * 10.1 ↖
 beste Teiler 83.9 (9.) 584.7 (8.) 604.6 (2.)
 Trefferlage 0.28 mm links, 0.60 mm tief
 Streuwert 5.91, horizontal: 5.25, vertikal: 6.50



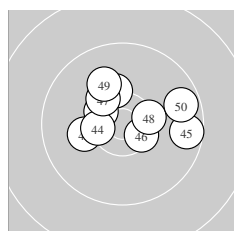
Serie 2:
 9.8 ↑ 10.4 * 9.6 ↘ 10.2 ↓ 9.9 ↖
 10.1 ↓ 10.4 * 9.5 ↘ 10.6 * 10.4 *
 beste Teiler 313.8 (19.) 409.8 (17.) 459.1 (20.)
 Trefferlage 1.07 mm links, 2.36 mm tief
 Streuwert 5.19, horizontal: 3.50, vertikal: 6.45



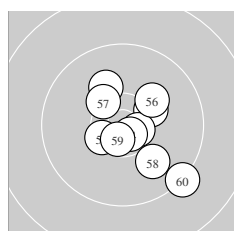
Serie 3:
 9.2 → 10.2 ↖ 10.3 ↑ 10.2 ← 9.8 ↖
 10.5 * 10.3 * 9.5 ↑ 10.5 * 10.5 *
 beste Teiler 343.2 (26.) 379.1 (30.) 379.6 (29.)
 Trefferlage 1.94 mm links, 3.64 mm hoch
 Streuwert 4.82, horizontal: 5.78, vertikal: 3.62



Serie 4:
 9.7 ← 10.2 ↓ 10.6 * 10.2 ↖ 10.7 *
 9.4 ↖ 10.4 * 9.5 ← 10.2 → 10.2 ↘
 beste Teiler 212.9 (35.) 267.9 (33.) 420.8 (37.)
 Trefferlage 3.10 mm links, 0.02 mm hoch
 Streuwert 5.08, horizontal: 6.12, vertikal: 3.76



Serie 5:
 10.3 ↑ 10.4 * 10.1 ← 10.4 * 9.6 →
 10.5 * 10.3 * 10.4 * 10.1 ↖ 9.7 →
 beste Teiler 354.8 (46.) 407.3 (42.) 410.3 (44.)
 Trefferlage 0.61 mm rechts, 1.70 mm hoch
 Streuwert 4.69, horizontal: 5.89, vertikal: 3.04



Serie 6:
 10.3 * 10.5 * 10.6 * 10.7 * 10.1 ↖
 10.2 ↗ 10.3 * 10.0 ↘ 10.6 * 9.3 ↘
 beste Teiler 195.2 (54.) 245.7 (59.) 260.9 (53.)
 Trefferlage 1.77 mm rechts, 0.50 mm tief
 Streuwert 4.53, horizontal: 4.34, vertikal: 4.71

Meyton Elektronik

ISSF Prone Men – *Wertung* –

offene Klasse

StartNr: 29

StandNr: 49

8. August 2020 12:25

Sawkin, Riccardo #44260111

PSV Olympia Berlin e.V. / PSV Olympia Berlin II

Unterschrift des Schützen

Meyton Elektronik