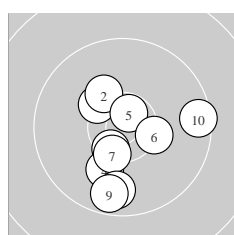
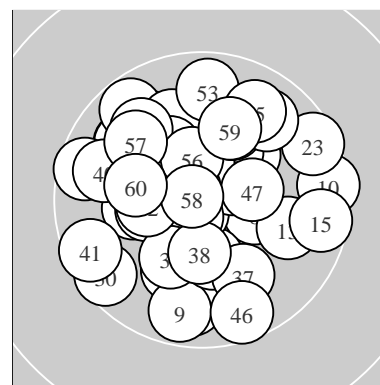
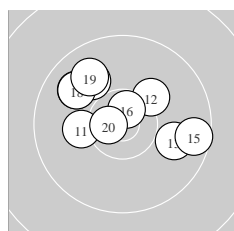


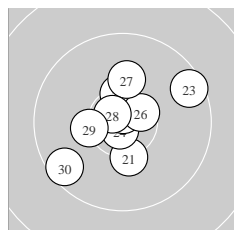
Ergebnis:	610.2	(581)							
Serien:	101.5	101.0	103.3	102.5	100.3	101.6			
Zähler:	41	19	0	0	0	0	0	0	0
Innenzehner:	26								
weiteste:	1135 (10), 1109 (23), 1094 (41)								
beste Teiler	95.1 (58.)	109.5 (25.)	127.7 (24.)						
Trefferlage	0.99 mm links, 1.26 mm hoch								
Streuwert	4.80, horizontal: 4.80, vertikal: 4.80								



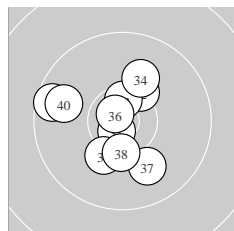
Serie 1:	10.3 *	10.2 ↘	10.5 *	10.1 ↓	10.7 *
	10.3 *	10.4 *	9.8 ↓	9.7 ↓	9.5 →
beste Teiler	226.9 (5.)	367.0 (3.)	427.6 (7.)		
Trefferlage	0.14 mm rechts, 2.21 mm tief				
Streuwert	4.91, horizontal: 4.59, vertikal: 5.21				



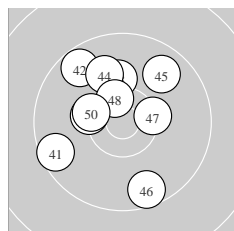
Serie 2:	10.2 ←	10.2 ↗	9.9 ↘	9.9 ↘	9.6 →
	10.7 *	10.0 ↘	9.9 ↘	9.9 ↘	10.7 *
beste Teiler	209.4 (20.)	226.5 (16.)	581.4 (12.)		
Trefferlage	0.83 mm links, 2.45 mm hoch				
Streuwert	5.15, horizontal: 6.36, vertikal: 3.54				



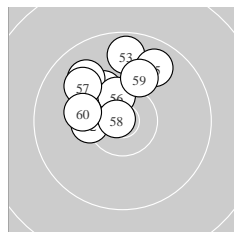
Serie 3:	10.3 *	10.4 *	9.6 ↗	10.8 *	10.8 *
	10.6 *	10.2 ↑	10.7 *	10.3 *	9.6 ↘
beste Teiler	109.5 (25.)	127.7 (24.)	192.6 (28.)		
Trefferlage	0.18 mm links, 0.52 mm hoch				
Streuwert	4.52, horizontal: 4.81, vertikal: 4.20				



Serie 4:	10.7 *	10.3 *	10.6 *	10.1 ↑	10.2 ↓
	10.8 *	10.0 ↘	10.4 *	9.6 ←	9.8 ←
beste Teiler	154.9 (36.)	174.9 (31.)	315.1 (33.)		
Trefferlage	1.51 mm links, 0.21 mm hoch				
Streuwert	4.60, horizontal: 4.72, vertikal: 4.46				



Serie 5:	9.6 ←	9.7 ↘	10.1 ↑	10.0 ↘	9.8 ↗
	9.6 ↓	10.4 *	10.5 *	10.3 *	10.3 *
beste Teiler	367.7 (48.)	458.1 (47.)	489.0 (50.)		
Trefferlage	1.66 mm links, 2.09 mm hoch				
Streuwert	5.45, horizontal: 5.10, vertikal: 5.78				



Serie 6:	10.3 ↘	10.3 *	9.7 ↑	9.9 ↘	9.8 ↗
	10.5 *	10.0 ↘	10.8 *	10.1 ↑	10.2 ←
beste Teiler	95.1 (58.)	382.7 (56.)	491.2 (52.)		
Trefferlage	1.91 mm links, 4.51 mm hoch				
Streuwert	3.54, horizontal: 3.73, vertikal: 3.34				

Meyton Elektronik

ISSF Prone Men – *Wertung* –

offene Klasse

StartNr: 30

StandNr: 43

6. November 2019 16:37

Martens, Hendrik #44252713

PSV Olympia Berlin e.V. / PSV Olympia Berlin II

Unterschrift des Schützen

Meyton Elektronik