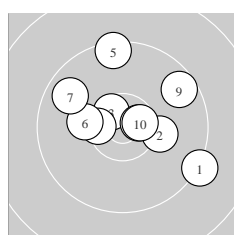
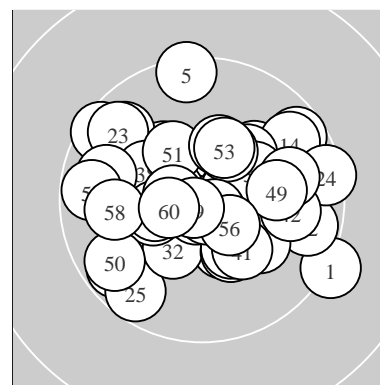
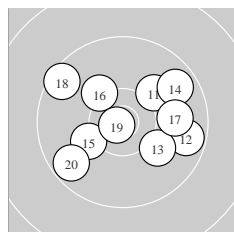


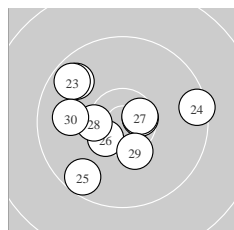
Ergebnis:	611.0	(580)
Serien:	100.9 99.9	100.9 104.0 101.9 103.4
Zähler:	40 20 0 0 0 0 0 0 0	
Innenzehner:	27	
weiteste:	1348 (1), 1192 (5), 1171 (24)	
beste Teiler	101.5 (19.) 105.3 (59.)	141.6 (44.)
Trefferlage	0.24 mm links, 0.44 mm hoch	
Streuwert	4.90, horizontal: 5.77, vertikal: 3.83	



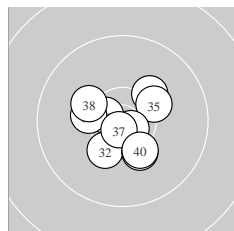
Serie 1:	9.3 ↘	10.2 →	10.6 *	10.5 *	9.5 ↑
	10.2 ←	9.8 ↙	10.6 *	9.6 ↗	10.6 *
beste Teiler	250.8 (8.) 278.4 (10.) 293.2 (3.)				
Trefferlage	1.06 mm rechts, 1.98 mm hoch				
Streuwert	5.67, horizontal: 6.43, vertikal: 4.79				



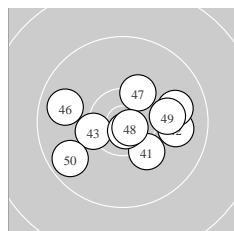
Serie 2:	10.1 ↗	9.7 →	10.1 ↘	9.7 ↗	10.2 ↖
	10.2 ↘	9.9 →	9.5 ↙	10.8 *	9.7 ↖
beste Teiler	101.5 (19.) 573.6 (16.) 602.6 (15.)				
Trefferlage	0.92 mm rechts, 0.52 mm hoch				
Streuwert	5.97, horizontal: 7.18, vertikal: 4.44				



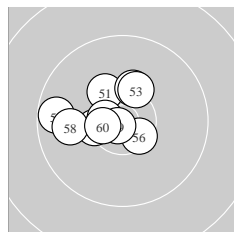
Serie 3:	10.6 *	9.8 ↘	9.7 ↘	9.5 →	9.6 ↖
	10.5 *	10.6 *	10.4 *	10.3 *	9.9 ←
beste Teiler	278.7 (21.) 281.7 (27.) 363.5 (26.)				
Trefferlage	1.74 mm links, 0.15 mm hoch				
Streuwert	5.50, horizontal: 6.34, vertikal: 4.52				



Serie 4:	10.6 *	10.3 *	10.3 ←	10.2 ↗	10.3 ↗
	10.7 *	10.8 *	10.2 ↘	10.3 ↘	10.3 *
beste Teiler	145.2 (37.) 174.8 (36.) 278.9 (31.)				
Trefferlage	0.06 mm links, 0.50 mm tief				
Streuwert	3.53, horizontal: 3.74, vertikal: 3.30				



Serie 5:	10.2 ↘	9.9 →	10.4 *	10.8 *	9.9 →
	9.8 ←	10.3 *	10.8 *	10.1 →	9.7 ↖
beste Teiler	141.6 (44.) 144.0 (48.) 475.0 (43.)				
Trefferlage	0.94 mm rechts, 0.50 mm tief				
Streuwert	4.97, horizontal: 6.30, vertikal: 3.10				



Serie 6:	10.3 *	10.3 *	10.3 *	10.4 *	10.6 *
	10.5 *	9.7 ←	9.9 ←	10.8 *	10.6 *
beste Teiler	105.3 (59.) 273.0 (55.) 315.5 (60.)				
Trefferlage	2.57 mm links, 0.99 mm hoch				
Streuwert	3.57, horizontal: 4.23, vertikal: 2.76				

ISSF Prone Men – *Wertung* – **offene Klasse**

StandNr: 50

Walther, Matthias #44252098

StartNr: 94

10. November 2019 12:28

SV Chemnitz / SV Chemnitz

Unterschrift des Schützen

Meyton Elektronik