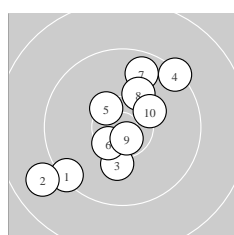
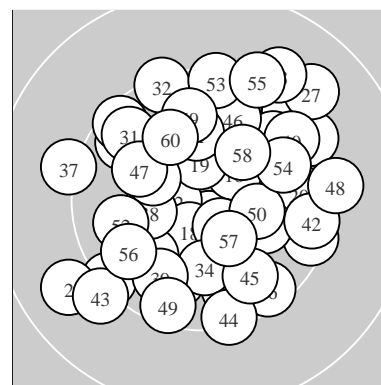
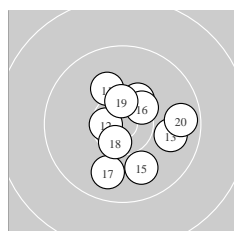


Ergebnis:	591.7	(564)
Serien:	99.7	101.9 97.2 96.9 97.1 98.9
Zähler:	25	34 1 0 0 0 0 0 0 0
Innenzehner:	11	
weiteste:	1613 (2), 1555 (27), 1483 (33)	
beste Teiler	200.5 (9.)	283.0 (12.) 320.1 (28.)
Trefferlage	0.86 mm rechts,	0.79 mm hoch
Streuwert	6.64,	horizontal: 6.58, vertikal: 6.69



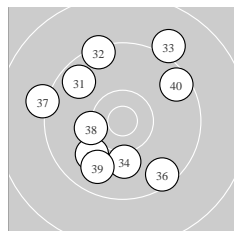
Serie 1:	9.4 ↙	8.9 ↙	10.2 ↓	9.4 ↗	10.4 *
	10.5 *	9.7 ↑	10.2 ↑	10.7 *	10.3 *
beste Teiler	200.5 (9.)	361.9 (6.)	420.9 (5.)		
Trefferlage	0.90 mm links, 0.17 mm hoch				
Streuwert	6.65, horizontal: 6.62, vertikal: 6.68				



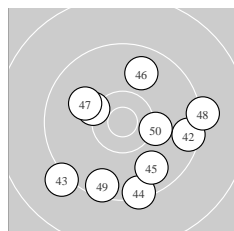
Serie 2:	10.1 ↖	10.6 *	9.9 →	10.3 *	10.0 ↓
	10.4 *	9.9 ↓	10.5 *	10.5 *	9.7 →
beste Teiler	283.0 (12.)	328.5 (18.)	387.6 (19.)		
Trefferlage	1.74 mm rechts, 0.29 mm tief				
Streuwert	4.65, horizontal: 4.49, vertikal: 4.80				



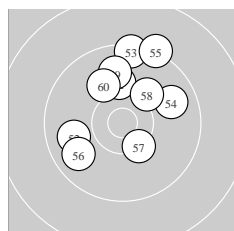
Serie 3:	9.8 ↗	9.5 →	10.1 →	9.4 ↗	9.7 ↖
	9.5 ↖	9.0 ↗	10.6 *	9.8 ↗	9.8 ↓
beste Teiler	320.1 (28.)	686.3 (23.)	912.0 (21.)		
Trefferlage	4.20 mm rechts, 2.45 mm hoch				
Streuwert	6.85, horizontal: 7.26, vertikal: 6.41				



Serie 4:	9.7 ↖	9.4 ↖	9.1 ↗	10.1 ↓	10.0 ↙
	9.6 ↘	9.2 ←	10.3 ←	9.9 ↙	9.6 ↗
beste Teiler	547.6 (38.)	685.5 (34.)	762.1 (35.)		
Trefferlage	1.59 mm links, 1.00 mm hoch				
Streuwert	7.76, horizontal: 7.36, vertikal: 8.15				



Serie 5:	10.3 ↖	9.5 →	9.2 ↙	9.4 ↓	9.8 ↓
	9.8 ↑	10.1 ↖	9.3 →	9.5 ↓	10.2 →
beste Teiler	542.9 (41.)	567.7 (50.)	704.8 (47.)		
Trefferlage	1.59 mm rechts, 2.81 mm tief				
Streuwert	7.28, horizontal: 7.71, vertikal: 6.82				



Serie 6:	10.1 ↑	9.9 ←	9.4 ↑	9.8 ↗	9.3 ↑
	9.8 ↙	10.4 *	10.2 ↗	9.9 ↑	10.1 ↖
beste Teiler	476.8 (57.)	632.0 (58.)	678.3 (51.)		
Trefferlage	0.13 mm rechts, 4.26 mm hoch				
Streuwert	5.83, horizontal: 5.37, vertikal: 6.26				

ISSF Prone Men – *Wertung* – **offene Klasse**

StandNr: 45

Trischberger, Anna Maria #999900057

StartNr: 120

8. Dezember 2019 13:50

SV Chemnitz / SV Chemnitz

Unterschrift des Schützen

Meyton Elektronik